

DEKOMA®



cameron

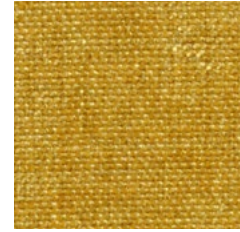
# cameron



Ivory 900



Sand 906



Acacia 401



Waterrose 700



Tangerine 303



Spice 400



Lipstick 200



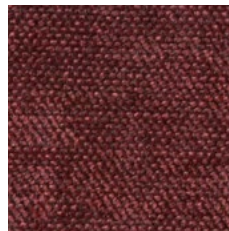
Magenta 202



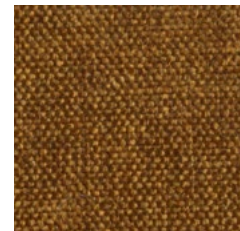
Rust 301



Sorbet 703



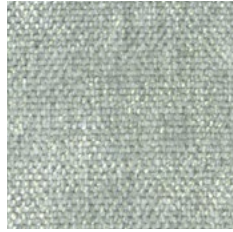
Vino 204



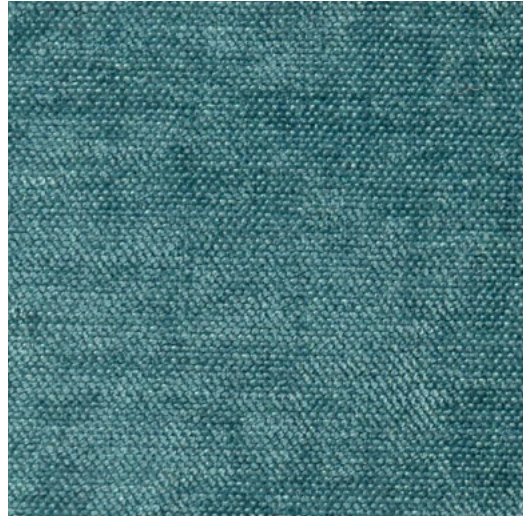
Ginger 300



Mushroom 902



Mist 604



Blue 605



Butterscotch 904



Pelican 807



Seagrass 402



Bamboo 503



Denim 610



Bronze 100



Leaf 506



Garden 500



Iris 702



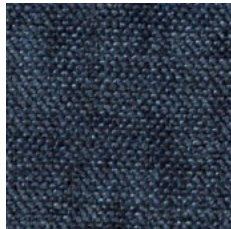
Silver 806



Pebble 805



Mouse 804



Marine 608



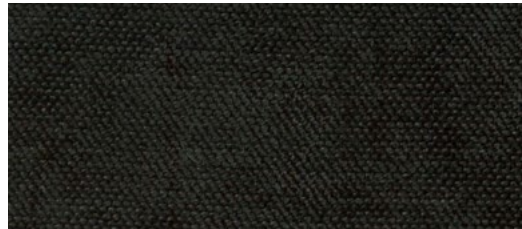
Ocean 609



Teak 107



Cobalt 601



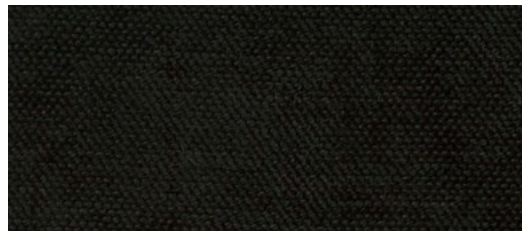
Pewter 801



Gray 104



Grape 705



Onyx 800



name **CAMERON**

---

composition **100% PL**

---

weight ± **425 g/m<sup>2</sup>**

---

usable width ± **138 cm**

---

abrasion resistance  
Martindale cycles EN ISO 12947-2 **>100 000**

---

colour fastness to light (1-8) EN ISO 105-B02 **3-6**

---

colour fastness to rubbing (1-5) EN ISO 105-X12 **wet 4  
dry 4-5**

---

seam slippage EN ISO 13936-2 **↑      →  
4      4      mm**

---

shrinkage **↑      →  
wet <0,5% <0,5%  
dry 0% <0,5%**

---

pilling (1-5) EN ISO 12945-2 **4-5**

---

flame retardant standards EN 1021 **1**  
BS 5852 **0**  
US Cal. Bull. 117 **Passed**

---

type **upholstery  
decorative**

---

cleaning



legend

**PL** - Polyester

Colour shades may slightly vary from dye-lot to dye-lot.  
For more details, visit our website [dekoma.eu](http://dekoma.eu)



**upholstery**



**decorative**



**curtains**



**standard  
100**



Scan the QR code to find out  
more about this product.

