

DEKOMA®



tanami

tanami



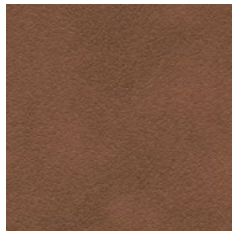
Ancient Scroll 03



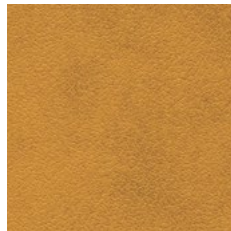
Mountain Trail 07



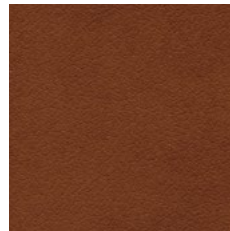
Coffee Quarts 13



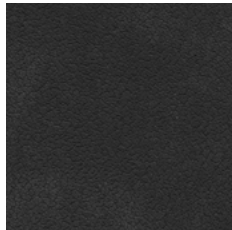
Thrush 02



Taffy 04



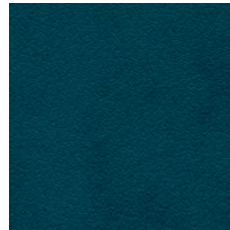
Glazed Ginger 10



Asphalt 06



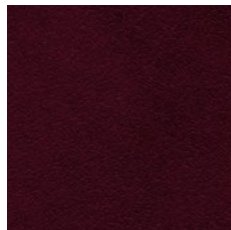
Loden Green 01



Moroccan Blue 11



Italian Plum 09



Cordovan 08



Urban Red 12



Hot Fudge 05

name **TANAMI**

composition **83% PVC, 7% CO, 7% PL, 3% PU**

weight ± **620 g/m²**

usable width ± **138 cm**

thickness ± **1,15 mm**

abrasion resistance
Martindale cycles EN ISO 5470-2 **>80 000**

colour fastness to light (1-8) EN ISO 105-B02 **≥6**

colour fastness to rubbing (1-5) EN ISO 105-X12 **wet ≥4
dry 4-5**

blood and urine resistance (1-5) EN 15973 **≥4**

flame retardant standards EN 1021 **1**
EN 1021 **2**
BS 5852 **Crib 5 (when using FR foam 37kg/m³)**
DIN 4102 **B2**
IMO **FTPC Part 8**
NF P92-507 **M2**
NF D 60-013 **Passed**

type **upholstery
decorative**



cleaning

Clean regularly with pH-neutral soap and a soft brush. Always rinse with clean water. Any stains such as pen ink, coffee, wine, eosine or denim should be cleaned off immediately in order to prevent them becoming permanently embedded in the coated fabric. You can find the full cleaning instruction on dekoma.eu

legend

CO - Cotton
PL - Polyester
PU - Polyurethane
PVC - Polyvinyl chloride

**Colour shades may slightly vary from dye-lot to dye-lot.
For more details, visit our website dekoma.eu**



**flame
retardant**



upholstery



decorative



**water
repellent**



**anti-
bacterial**



**phtalates
free**



IMO



sanitized



Scan the QR code to find out more about this product.

